

Clayoo for Rhino 2 Day Training Outline & Objectives



Simply Rhino Limited
0208 498 9900
www.simplyrhino.co.uk
training@simplyrhino.co.uk



Introduction to Clayoo®

Clayoo® is an advanced modeling application with the ability to effortlessly create any form efficiently and accurately, however complex. It's like modeling by hand! This is the concept of Clayoo®. It doesn't matter whether you start from a sketch, curve, or a 3-D object, you can pull, push, and move until you get what you want.

Ideal for designing architecture, jewelry, consumer products, toys, aerospace, marine, furniture. Anyone who needs to create complex free-form shapes can use Clayoo®.

When precision is a must, Clayoo® offers real-time tools to analyze distances, variance draft angle, thickness and more.

Not only modeling, but manufacturing. Clayoo® geometry is great for manufacturing prototypes and molds. When exporting to STL Clayoo® automatically generates closed meshes.

For reverse engineering with advanced re-topology tools Clayoo® allows you to easily create surfaces over digitized objects and to convert the result as NURBS surfaces.

Clayoo 1.0 Two Day Training

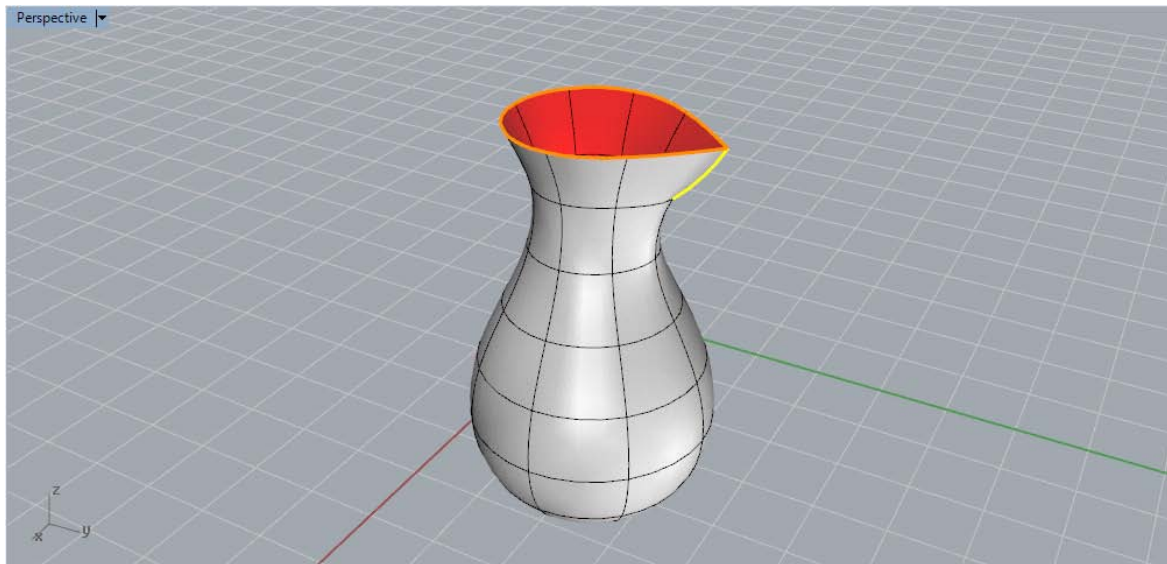
Tools overview / getting started:

Primitives, create, edition, selection.



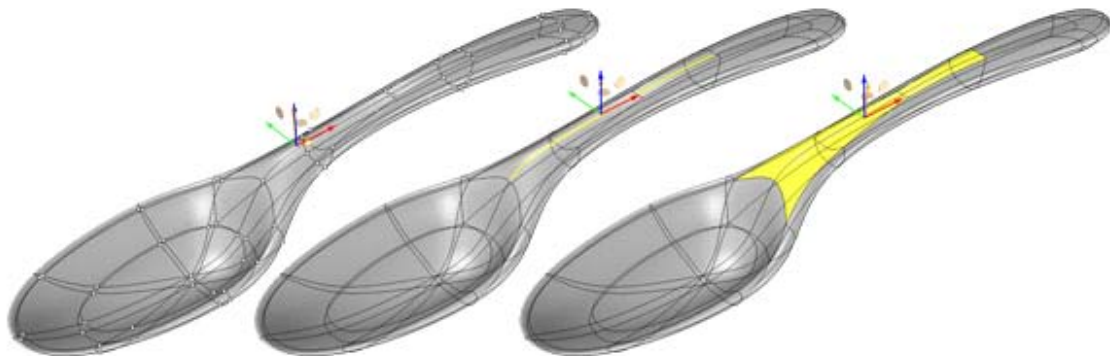
Pitcher exercise:

Revolve, edge selection, move, crease, shell, extrude along curve.



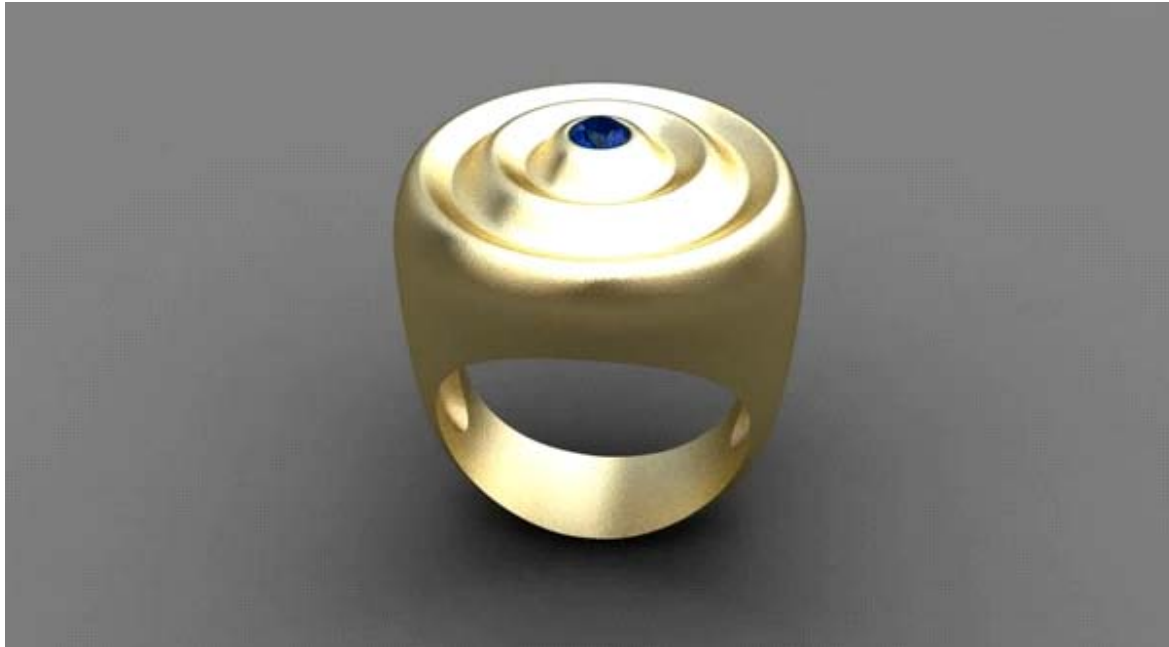
Spoon exercise:

Sphere, shell, face selection, extrude, edge selection, move / scale.



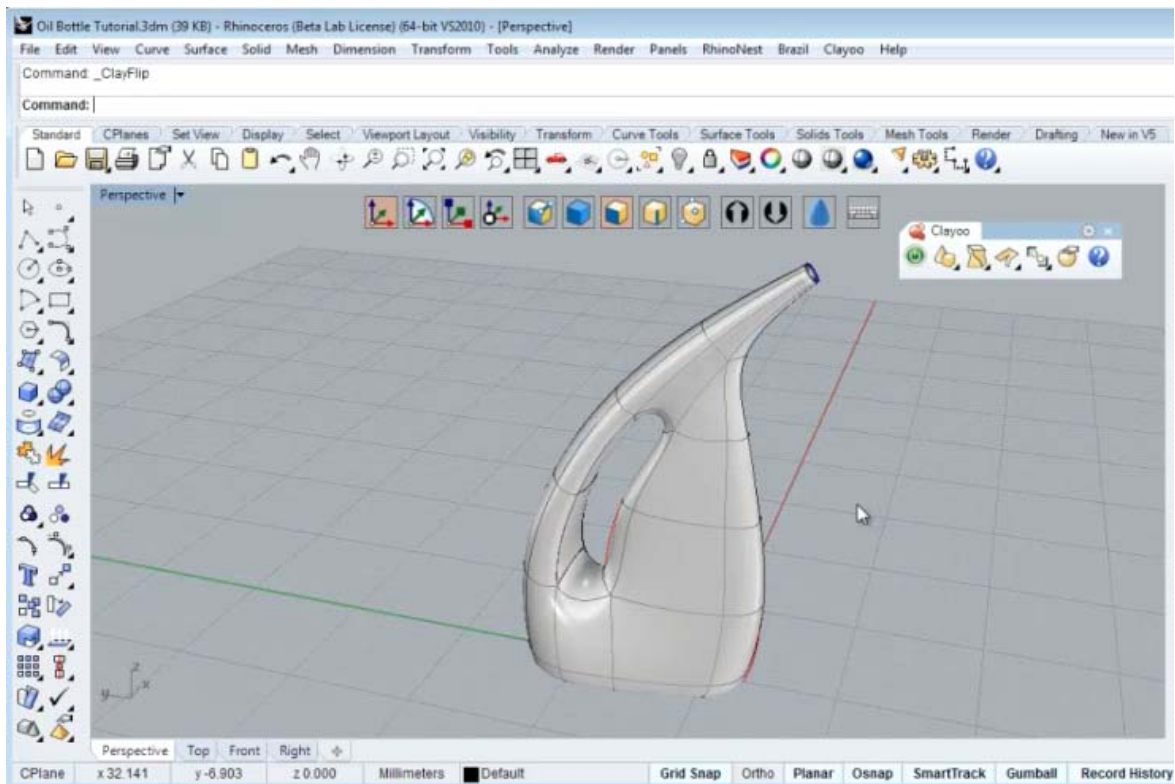
Signet ring exercise:

Revolve, edge selection, move/scale, extrude edge, collapse, shell, ClayToNurbs, Boolean difference.



Oil Bottle exercise:

Pipe, project to plane, extrude, edge selection, move, add face, extrude, fill, shell.

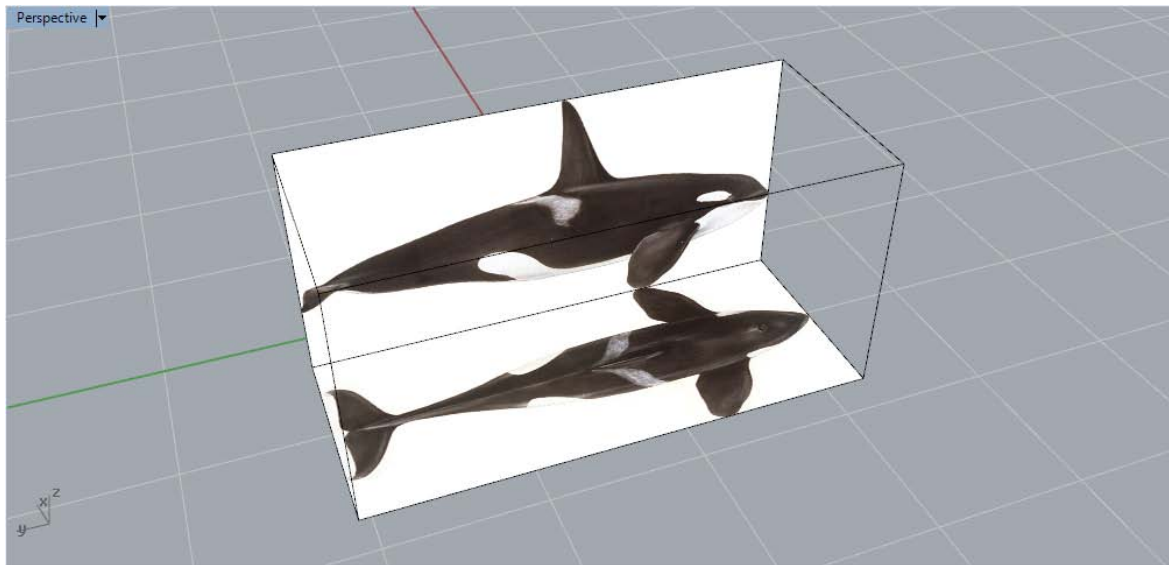


Juicer Exercise:

Revolve, point selection, move/scale, select loop edge, sets, scale, pipe, bridge.

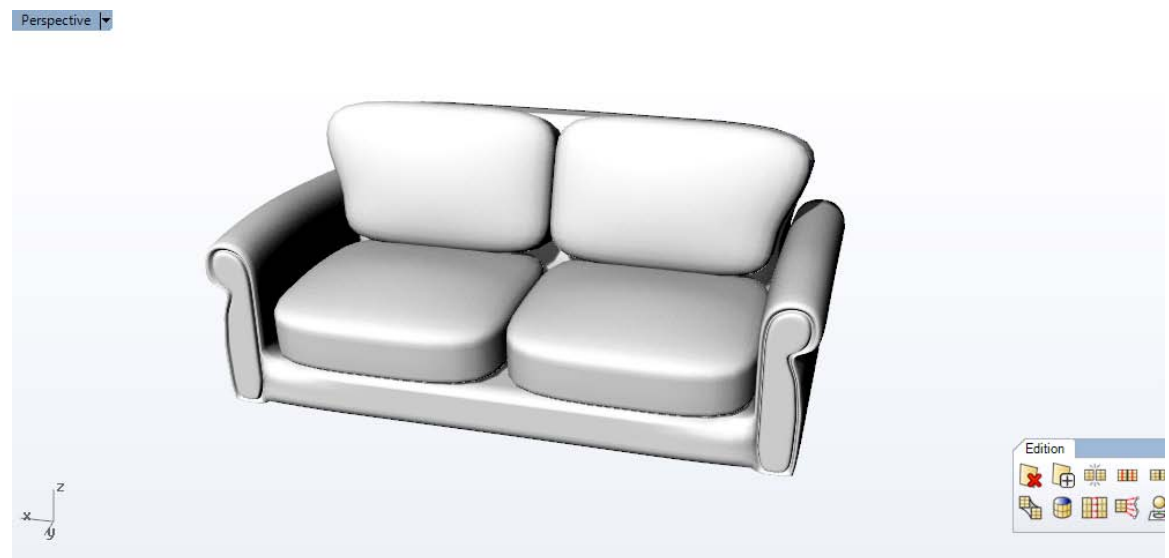
Orca exercise:

Blue print, sweep 2, edge selection, point selection, move/scale



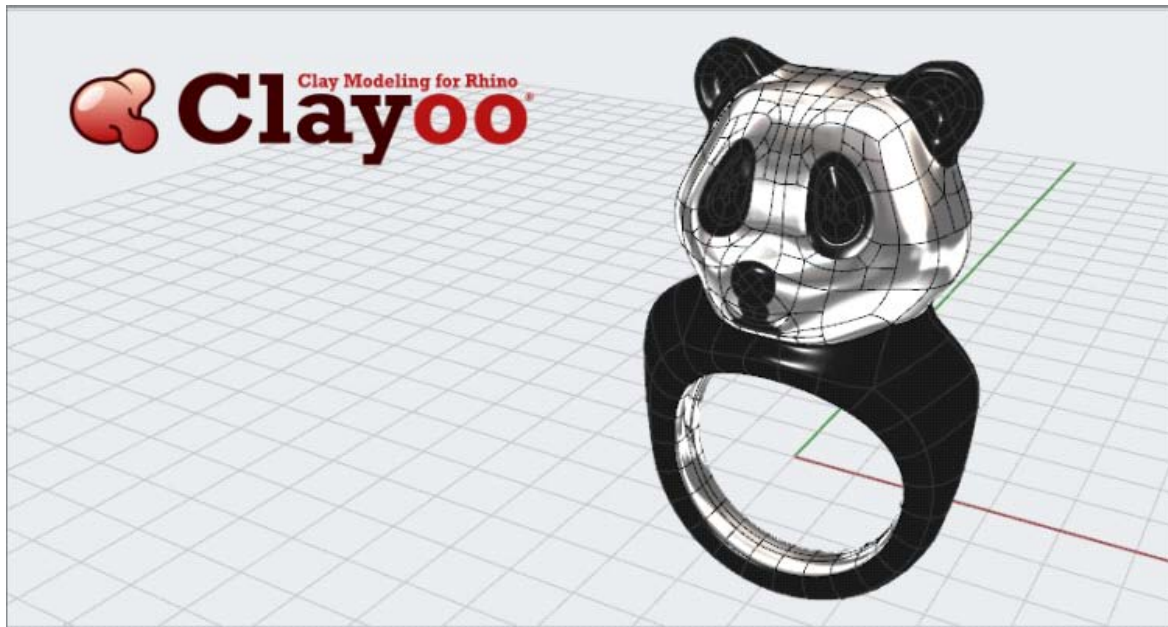
Sofa exercise:

Create by curve, extrude, project to plane, extract, shell, mirror, merch

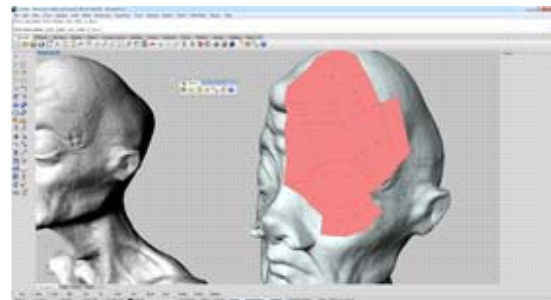
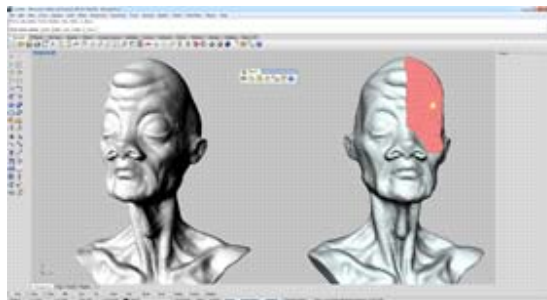


Panda ring:

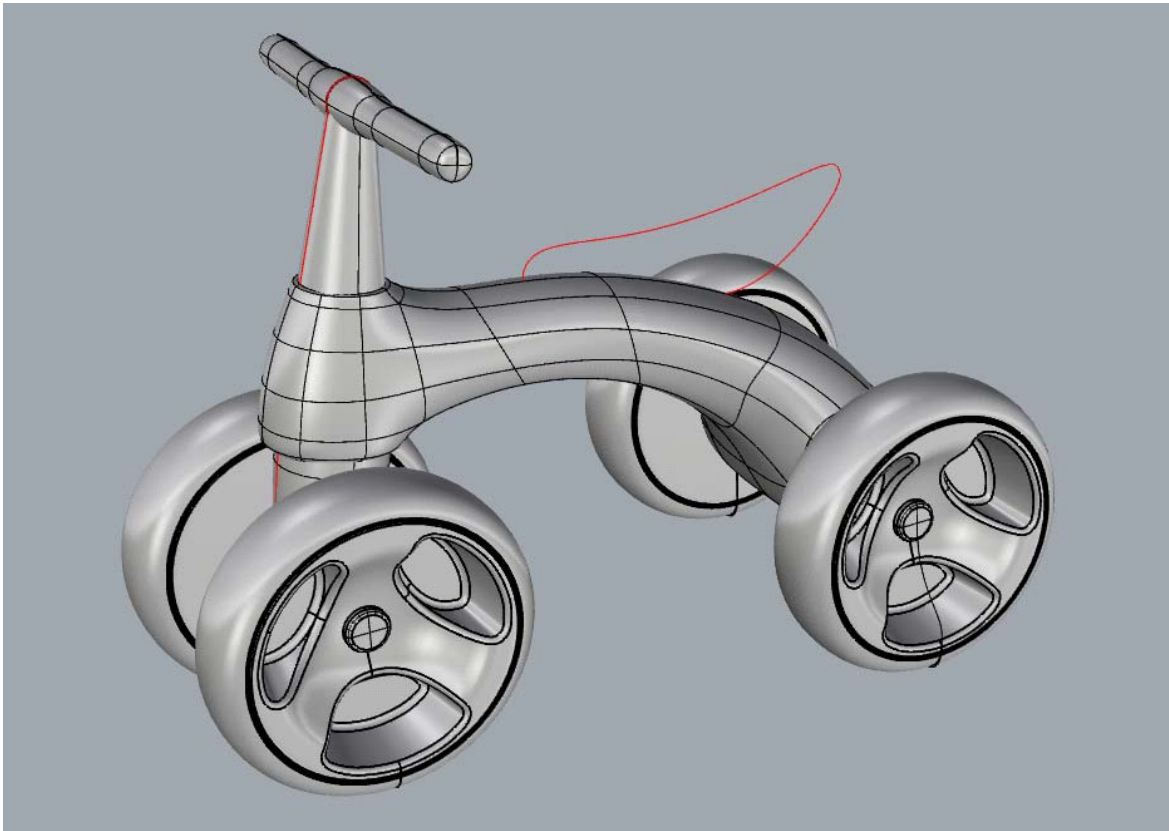
Ring, sphere, edge selection, point selection, move/scale, extrude, shell



Retopology exercise:



Quadricycle exercise:



Questions and Answers